

BALDOR® • RELIANCE 

Product Information Packet

UCME3145

3-4.5HP,3450RPM,3PH,60HZ,143TYZ,3528M,TE

Part Detail							
Revision:	K	Status:	PRD/A	Change #:		Proprietary:	No
Type:	AC	Elec. Spec:	35WGS055	CD Diagram:	CD0005	Mfg Plant:	
Mech. Spec:	35E2501	Layout:	35LYE2501	Poles:	02	Created Date:	03-04-2014
Base:	RG	Eff. Date:	11-13-2018	Leads:	9#18		

Specs			
Catalog Number:	UCME3145	Heater Indicator:	No Heater
Enclosure:	TEAO	Insulation Class:	H
Frame:	143TYZ	Inverter Code:	Not Inverter
Frame Material:	Steel	KVA Code:	K
Output @ Frequency:	3.000 HP @ 60 HZ	Lifting Lugs:	No Lifting Lugs
	4.500 HP @ 60 HZ	Locked Bearing Indicator:	Locked Bearing
Synchronous Speed @ Frequency:	3600 RPM @ 60 HZ	Motor Lead Quantity/Wire Size:	9 @ 18 AWG
Voltage @ Frequency:	460.0 V @ 60 HZ	Motor Lead Exit:	Pipe Or Pipe Adaptor
	230.0 V @ 60 HZ	Motor Lead Termination:	Flying Leads
	208.0 V @ 60 HZ	Motor Type:	3528M
XP Class and Group:	None	Mounting Arrangement:	F1
XP Division:	Not Applicable	Product Family:	General Purpose
Agency Approvals:	CSA	Product Type:	FARM DUTY
	UR	Pulley End Bearing Type:	Sealed Bearing
Auxillary Box:	No Auxillary Box	Pulley Face Code:	Standard
Auxillary Box Lead Termination:	None	Pulley Shaft Indicator:	Tapped & Key
Base Indicator:	Rigid	Rodent Screen:	None
Bearing Grease Type:	Polyrex EM (-20F +300F)	RoHS Status:	ROHS COMPLIANT

Blower:	None	Shaft Extension Location:	Pulley End
Current @ Voltage:	6.000 A @ 460.0 V	Shaft Ground Indicator:	No Shaft Grounding
	13.000 A @ 208.0 V	Shaft Rotation:	Reversible
	12.000 A @ 230.0 V	Shaft Slinger Indicator:	No Slinger
Design Code:	B	Speed Code:	Single Speed
Drip Cover:	No Drip Cover	Motor Standards:	NEMA
Duty Rating:	CONT	Starting Method:	Direct on line
Electrically Isolated Bearing:	Not Electrically Isolated	Thermal Device - Bearing:	None
Feedback Device:	NO FEEDBACK	Thermal Device - Winding:	Normally Closed Thermostat
Front Face Code:	Standard	Vibration Sensor Indicator:	No Vibration Sensor
Front Shaft Indicator:	None	Winding Thermal 1:	None
		Winding Thermal 2:	None

Nameplate NP1279L									
CAT.NO.	UCME3145								
SPEC.	35E2501S055G1								
HP	3-4.5								
VOLTS	208-230/460								
AMP	13-12/6								
RPM	3450								
FRAME	143TYZ								
SER.F.	1.00								
NEMA-NOM-EFF									
RATING	40C AMB-CONT								
CC									
DE	6206								
ENCL	TEAO								

Nameplate NP1263L	
CAT.NO.	UCME3145
SPEC.	35E2501S055G1
HP	3-4.5
VOLTS	208-230/460
AMP	13-12/6
RPM	3450
FRAME	143TYZ
SER.F.	1.00
NEMA-NOM-EFF	
RATING	40C AMB-CONT
CC	
DE	6206
ENCL	TEAO
CODE	K
DES	B
CL	H
PF	
ODE	6203
SN	
HZ	60
PH	3
USABLE AT 208V	13

Parts List		
Part Number	Description	Quantity
SA277346	SA 35E2501S055G1	1.000 EA
RA263897	RA 35E2501S055G1	1.000 EA
HA6021A01SP	ADAPTOR, MACH	1.000 EA
36GS5000	GASKET CONDUIT ADAPTOR	1.000 EA
51XB1016A08	10-16X 1/2HXWSSLD SERTYB	2.000 EA
11XW1032G06	10-32 X .38, TAPTITE II, HEX WSHR SLTD U	1.000 EA
35EP3122F00	MASTER ODE,203 BRG,#26 DRN	1.000 EA
HW5100A03	WAVY WASHER (W1543-017)	1.000 EA
10XN2520A24	1/4-20X 1 1/2 HEX HD X	2.000 EA
HW1001A25	LOCKWASHER 1/4, ZINC PLT .493 OD, .255 I	2.000 EA
35EP3113B06	PU EP ENCL,06 BRG, SEAL, W/O GREASER	1.000 EA
HW4600B50	SEAL 1.156 X 1.874 X 0.250 SINGLE LIP DB	1.000 EA
HA1005A22	SLINGER, OD 2.00, ID 1.14, 206 BRG, GM	1.000 EA
XY1032A02	10-32 HEX NUT DIRECTIONAL SERRATION	4.000 EA
HW2501D13	KEY, 3/16 SQ X 1.375	1.000 EA
HA7000A01	KEY RETAINER 7/8" DIA SHAFT	1.000 EA
85XU0407S04	4X1/4 U DRIVE PIN STAINLESS	2.000 EA
MJ5001A27	32220KN GRAY SEALER *MIN BUY 4 QTS=1GAL	0.001 QT
LD5000B01	LEAD ASSY, ML1400DF18 W/#10 RING 36"	1.000 EA
MG1025C02	WILKOFASST SG, 787.105, TAN	0.017 GA
HA3100A20	THRUBOLT 10-32 X 9.812	4.000 EA
LC0145B01	CONNECTION LABEL	1.000 EA
LB1119N	WARNING LABEL	1.000 EA
MN416A01	TAG-INSTAL-MAINT no wire (1200/bx) 3/19	1.000 EA

Parts List (continued)		
Part Number	Description	Quantity
NP1279L	ALUM FARM DUTY UL CSA CC	1.000 EA
NP1263L	AUX, GP, ALUM, CC, LASER ETCHED	1.000 EA
36PA1000	PKG GRP, PRINT PK1016A06	1.000 EA
FE-0000001	ZRTG FE ASSEMBLY	1.000 EA

Accessories		
Part Number	Description	Multiplier
35-1325	C FACE KIT	A8

AC Induction Motor Performance Data
Record # 8898 - Typical performance - not guaranteed values

Winding: 35WGS055-R002	Type: 3528M	Enclosure: TEAO
-------------------------------	--------------------	------------------------

Nameplate Data				460 V, 60 Hz: High Voltage Connection	
Rated Output (HP)	3-4.5			Full Load Torque	6.8 LB-FT
Volts	208-230/460			Start Configuration	direct on line
Full Load Amps	13-12/6			Breakdown Torque	31.6 LB-FT
R.P.M.	3450			Pull-up Torque	17.1 LB-FT
Hz	60	Phase	3	Locked-rotor Torque	28 LB-FT
NEMA Design Code	B	KVA Code	K	Starting Current	50 A
Service Factor (S.F.)	1			No-load Current	3 A
NEMA Nom. Eff.	0	Power Factor	0	Line-line Res. @ 25°C	3.8 Ω
Rating - Duty	40C AMB-CONT			Temp. Rise @ Rated Load	

Load Characteristics 460 V, 60 Hz, 4.5 HP

% of Rated Load	25	50	75	100	125	150
Power Factor	48	69	81	86	89	92
Efficiency	68.9	79.4	82.5	82.7	81.7	79.8
Speed	3562	3530	3492	3455	3412	3359
Line amperes	3.2	3.9	4.8	5.9	7.1	8.4

Performance Graph at 460V, 60Hz, 4.5HP Typical performance - Not guaranteed values

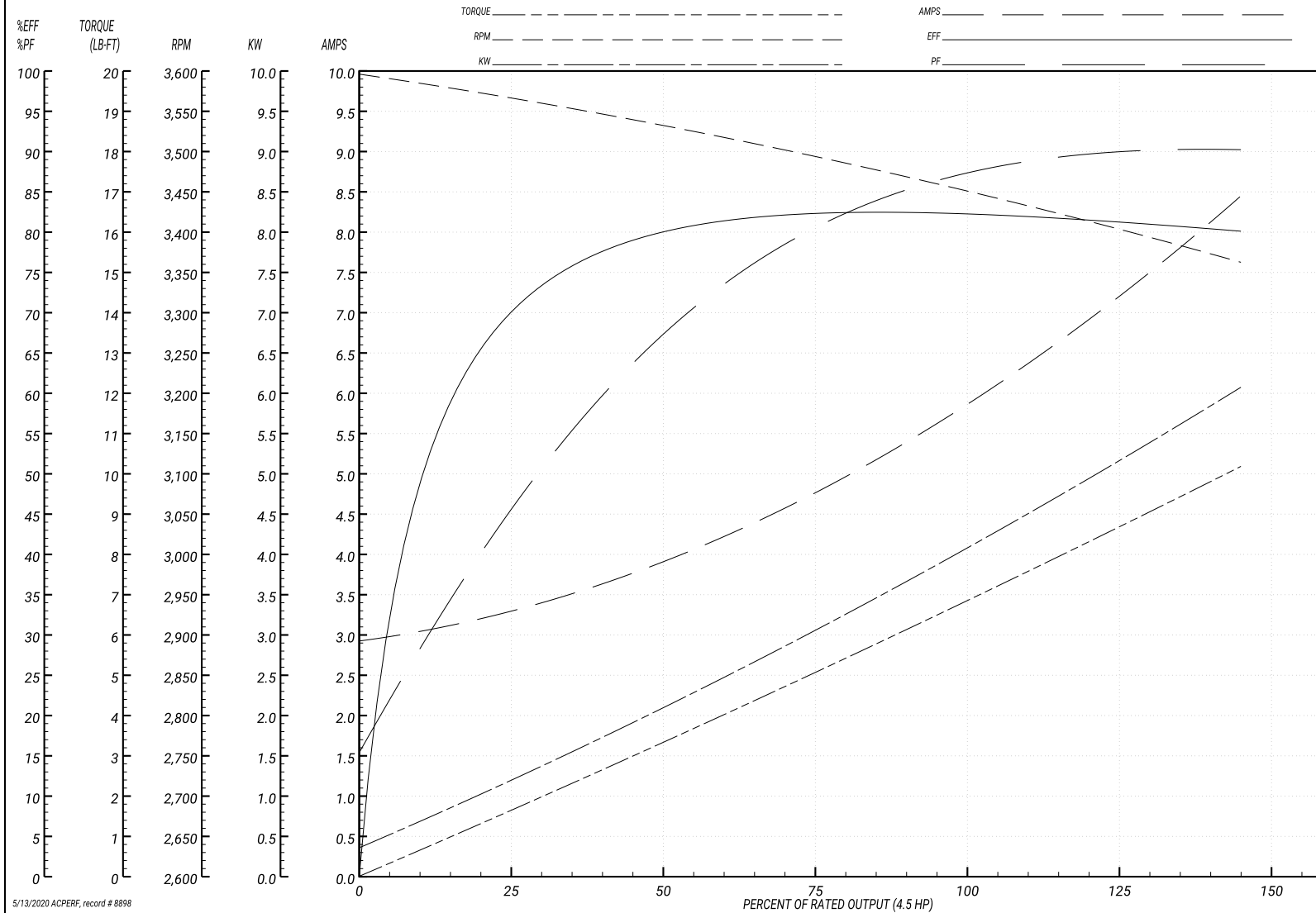
ABB Motors and Mechanical Inc.

WINDING # 35WGS055

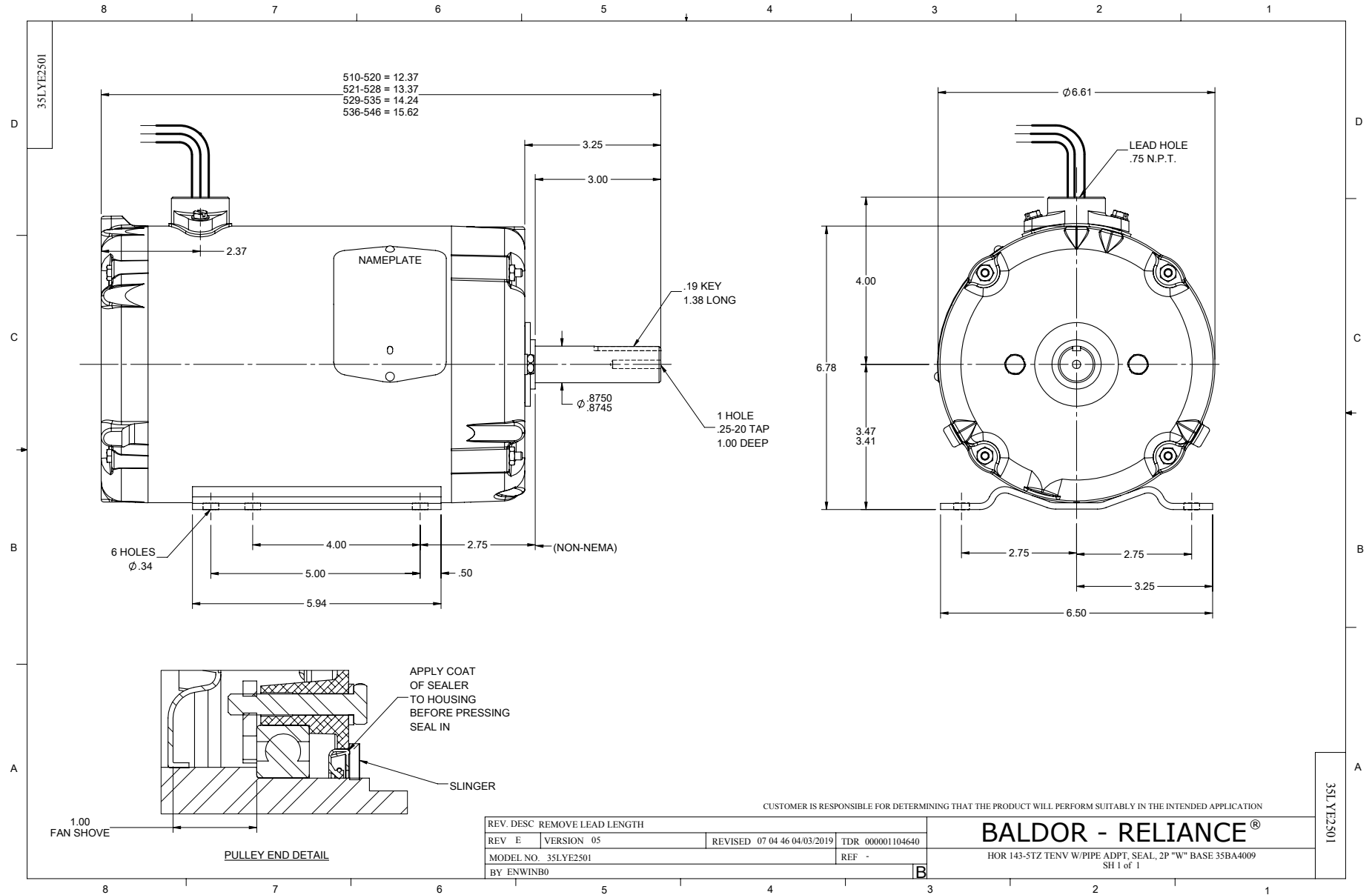
Typical performance - not guaranteed values.

4.5 HP 3 PH 60 HZ 3450 RPM 460 V 3528M

TORQUES(LB-FT): PO=31.6 PU=17.1 LR=28 LRA=50



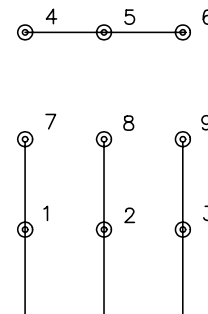
5/13/2020 ACPERF, record # 8898



CD0005

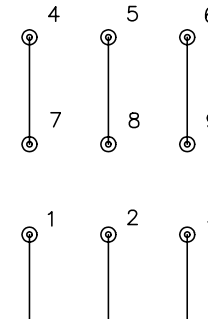


LOW VOLTAGE
(2Y)



LINE

HIGH VOLTAGE
(1Y)



LINE

NOTES:

1. INTERCHANGE ANY TWO LINE LEADS TO REVERSE ROTATION.
2. OPTIONAL THERMOSTATS ARE PROVIDED WHEN SPECIFIED.
3. ACTUAL NUMBER OF INTERNAL PARALLEL CIRCUITS MAY BE A MULTIPLE OF THOSE SHOWN ABOVE.
4. LEAD COLORS ARE OPTIONAL. LEADS MUST ALWAYS BE NUMBERED AS SHOWN.

REV. DESC: REVISE TO SHOW OPTIONAL COLORS			
REV. LTR: E	BY: JLP	REVISED: 01/19/99 10:15	TDR: 0171435
900000		FILE: AAA00005140	MDL: -
		MTL: -	

BALDOR ELECTRIC Co.

3PH, DV, 9 LEADS

CD0005